

Strategic ESG considerations in uranium

Annual General Meeting
19 November 2021



Agenda

ESG: push and pull factors

Strategic rationale

Looking over the horizon

Bannerman's ESG scorecard

ESG: push and pull factors in uranium



Strategic rationale for ESG investment...

Maintain social licence and meet host community expectations

Expand investor reach

**Enable financing options
(eg Equator Principles 4)**

Strategic rationale for ESG investment...

...and to mitigate project risks

Maintain social licence and meet host community expectations

Expand investor reach

Enable financing options
(eg Equator Principles 4)

Political, community or environmental roadblocks

Third party interference

Delays (cost escalation and opportunity cost)



Looking over the horizon

- Environmental
- Social
- Governance

ENVIRONMENTAL

The evolving role of carbon footprint in uranium mining

Carbon accounting driven by:

- Grid power: availability and source
- Mining method/grade/strip ratio
- Processing/milling approach

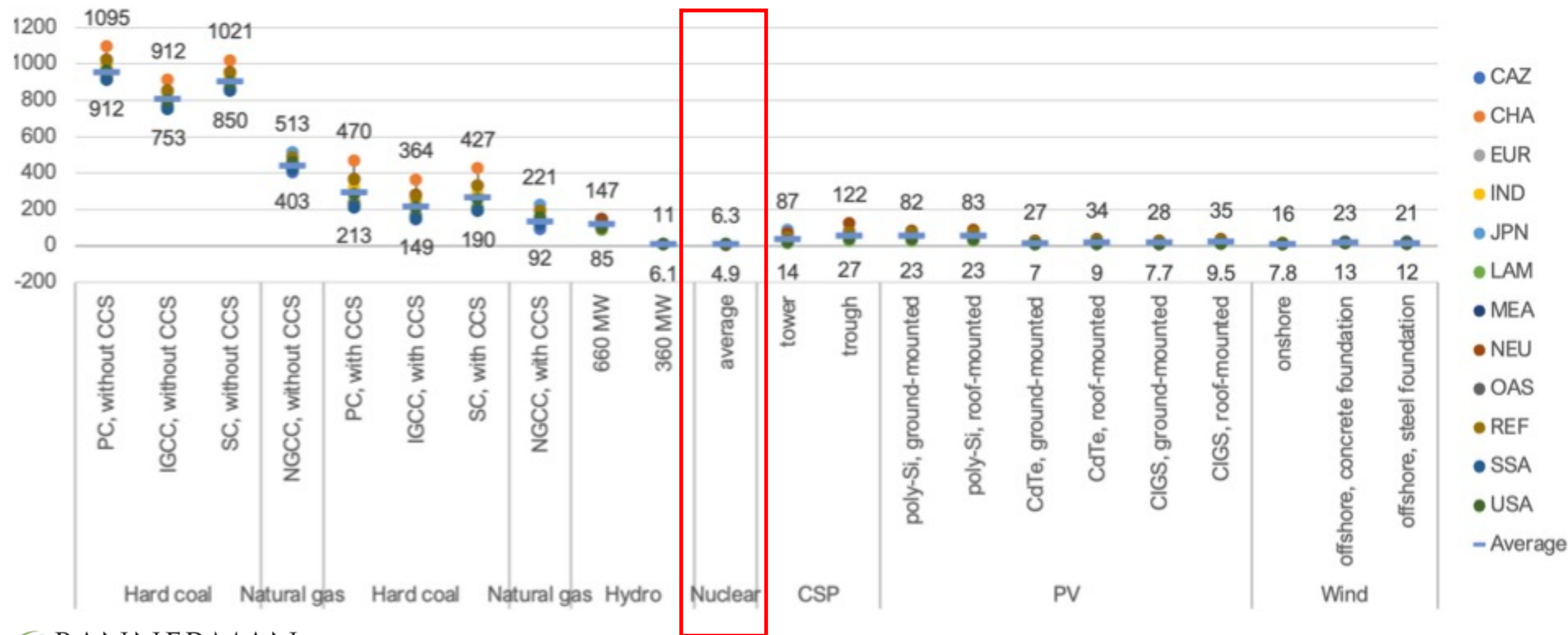
These key drivers are generally not within the control of the uranium mine

- Grid power determined by government
- Mining/processing/milling driven by ore body

However, carbon footprint in uranium mining should be viewed in context of life cycle carbon impacts of nuclear power

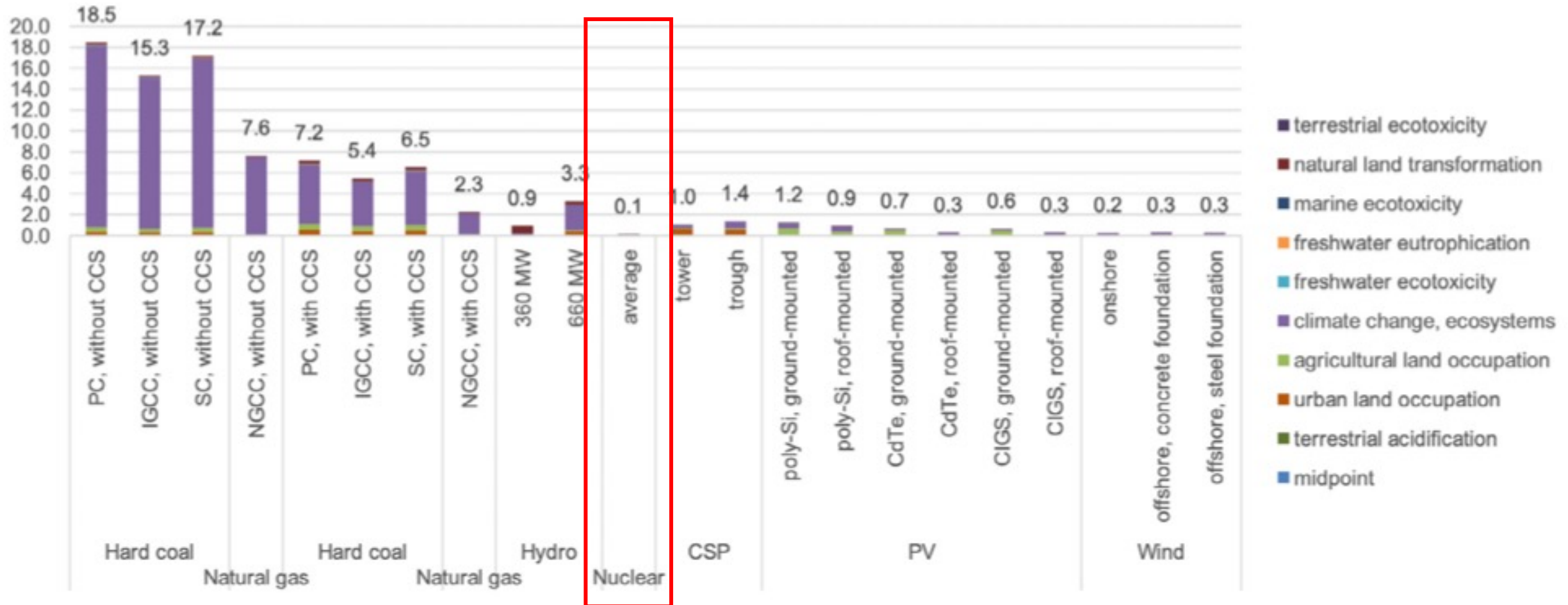
Nuclear already is lowest GHG emissions

Lifecycle GHG emissions, in g CO₂ eq. per kWh, regional variation, 2020



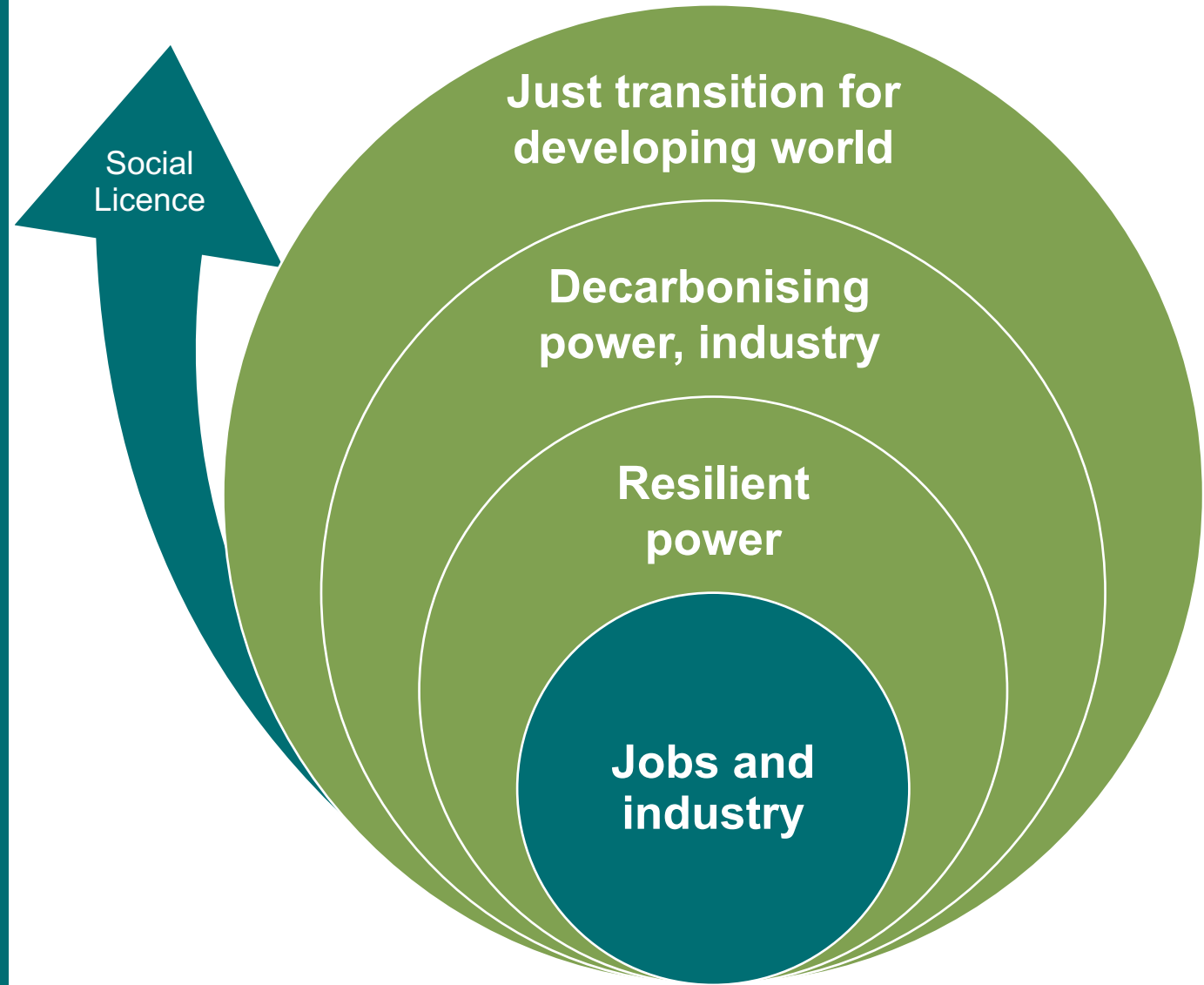
And lowest ecosystem impacts

Lifecycle impact on ecosystems, per MWh, in pointes



| SOCIAL

**Social benefits are
nuclear power's
key differentiator
(amongst clean energy)**



**Uranium mining should be
a driver for social good**

Strategic social advantages

High impact

Main uranium suppliers in either developing or first nations jurisdictions

Low (relative) cost

Social spend tiny per KWh

Social benefits attributable down-stream to utilities

Complements nuclear growth

Emerging markets

SMRs and Gen IV

Supports just transition as nuclear driver

Geographical comparative advantage



Bannerman Early Learner Assistance Program, Namibia

GOVERNANCE

Poor mining practices the enduring risk

Essential that world's best practice is universal

- Anti-nuclear interest groups
- Industry shares a collective social licence

Governance ultimately Board responsibility

- But industry has a role to play (both carrot and stick)

Risk is from new entrants

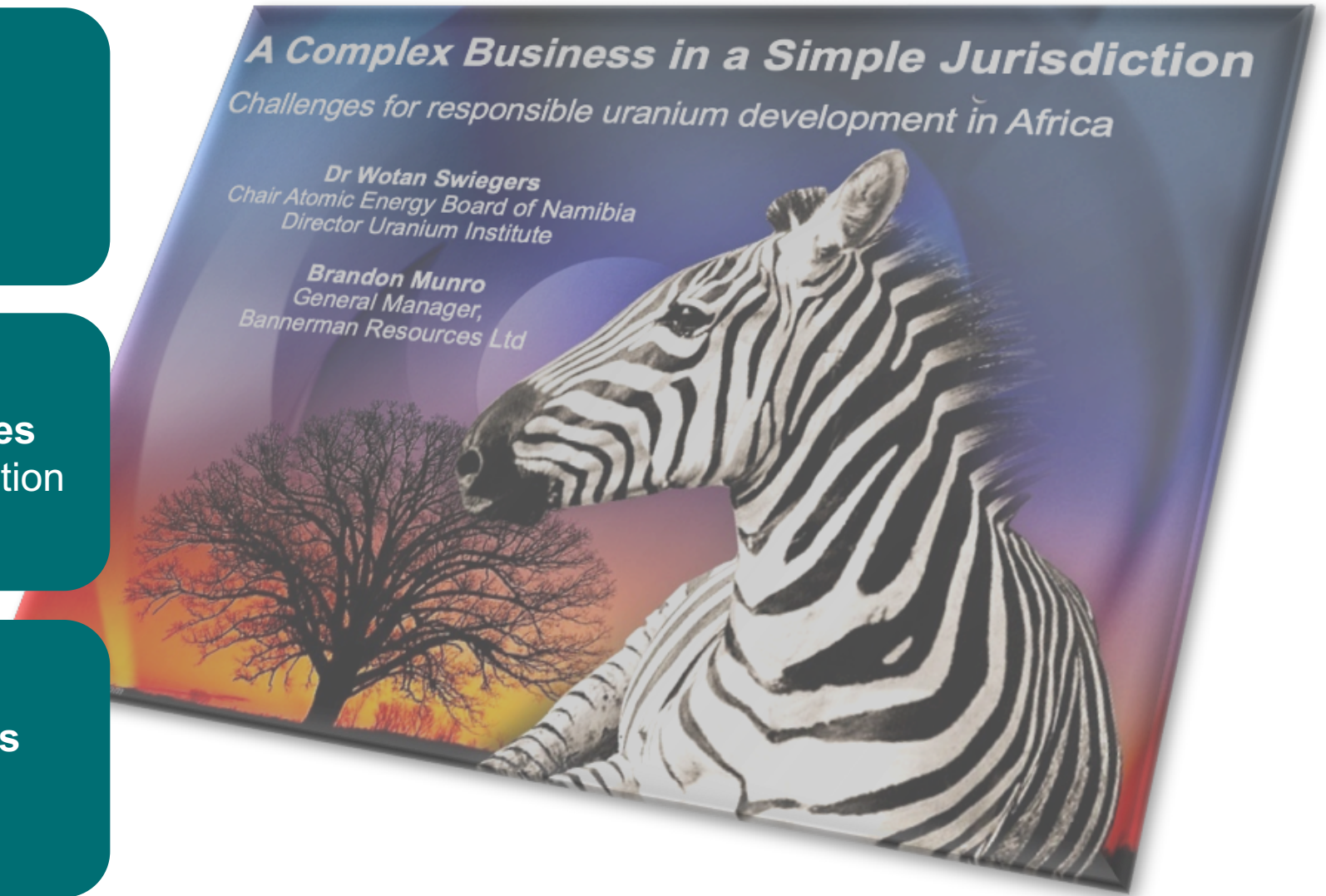
- Production in frontier/inexperienced jurisdictions
- Next uranium rush (new players from outside sector)

No easy solutions... but it is for industry to solve

Strengthen regulators
Identify bad actors

Encourage industry initiatives
eg Namibian Uranium Association

Traceability of poor practices
Including at exploration stage





Etango Project Heap Leach Demonstration Plant, Namibia

Bannerman's ESG scorecard

Is our ESG leadership on track?

Our Community Development Path



Early Learner Assistance program



5 Regions of
Namibia



Launched in
2011

Improve the rate of children
dropping out of school, to ultimately
keep them out of the poverty cycle.



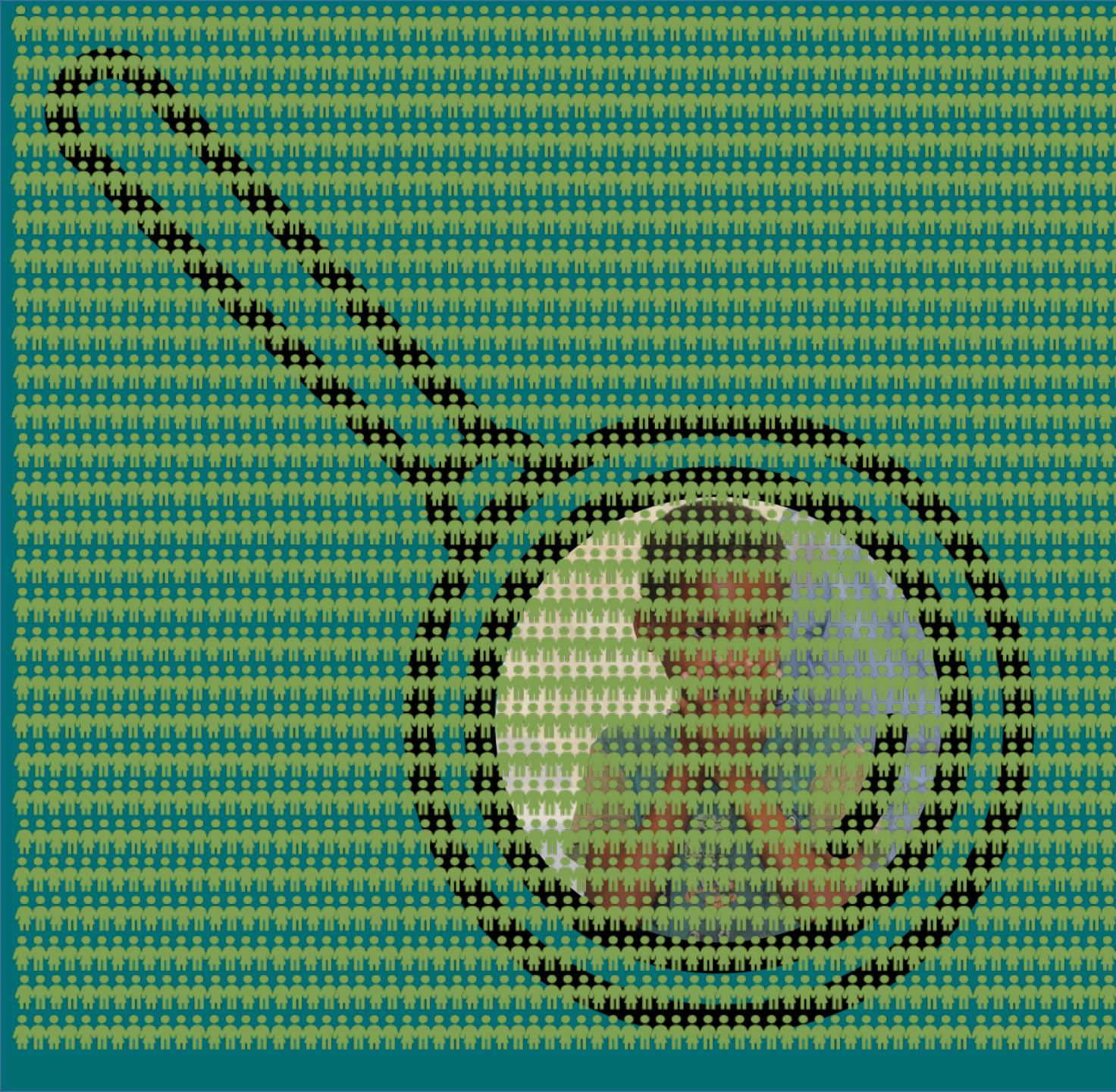
15,000 kms
travelled



School uniforms,
shoes, backpacks
& role models







We've
impacted the
life of 3,000
children since
2011....And we
aren't even
generating
revenue yet

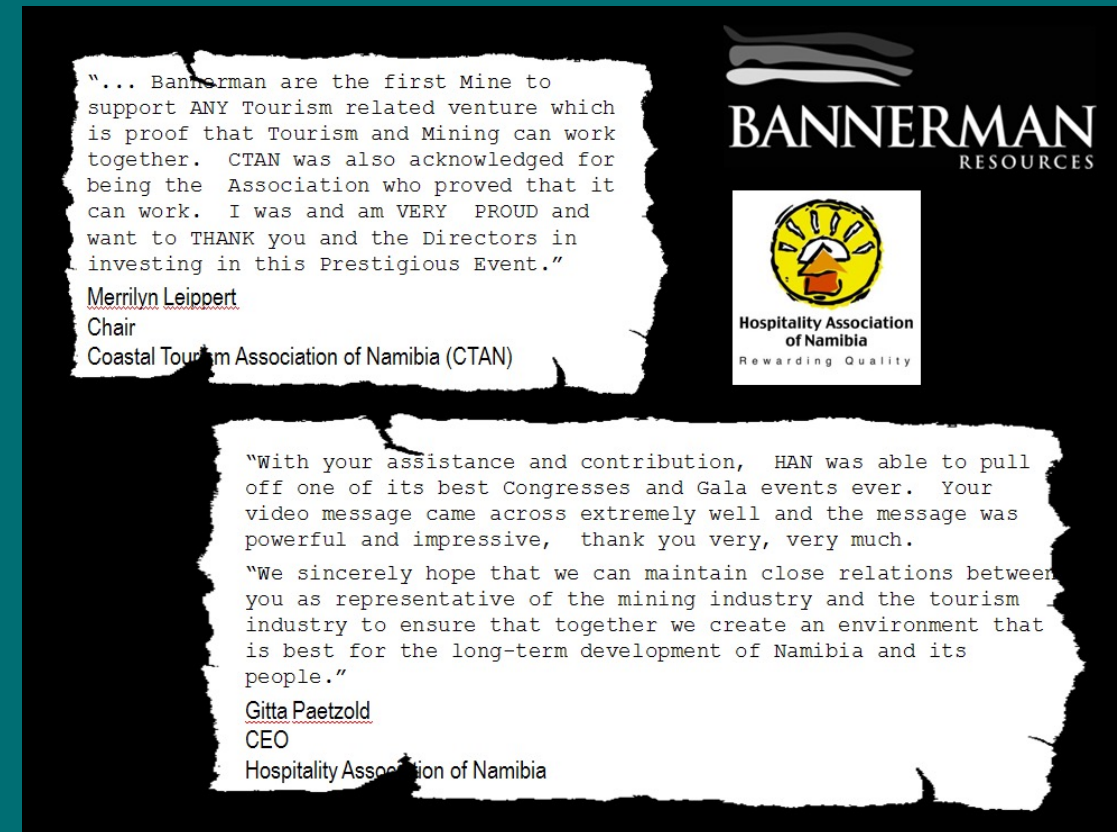
Mining-Tourism partnership

Bannerman's partnership with the Namibian tourism sector has been cited internationally as a case study in exceptional community engagement

In the Erongo Region of Namibia, mining and tourism were adversaries, after years of mutual suspicion and fear

Our authentic engagement from 2006 culminated in:

- A partnership with the Hospitality Association of Namibia (HAN)
- Multiple sponsorships of tourism sector/events
- Investment in growing Namibia's inventory of attractions
- A "Mining and Tourism Synergies Workshop" that generated long term success stories
- Genuine trust between Bannerman and coastal tourism operators



Testimonials from 2010



In 2019, Werner Ewald (MD Namibia) was awarded ***HAN Tourism Personality of the Year.***

Bestowing this honour on a *mining executive* was an extraordinary acknowledgement of support.

One Economy Foundation



One Economy Foundation is a Namibian non-profit helping to build a bridge of economic opportunity between the dual economy. In 2017 Bannerman gifted OEF a 5% loan-carried shareholding in Etango.

In five years we have dramatically grown the value* of OEF's 5% ownership of Etango

* EV look-through basis



Why partner with One Economy Foundation?

- ✓ Close alignment of OEF's community development programs and Bannerman's development philosophies
- ✓ OEF have a long-term perspective that aligns with our development pathway
- ✓ Sound understanding of Etango project and mining challenges – and therefore realistic expectations
- ✓ Loan carried ownership structure balances economic alignment with maintaining project financing attractiveness
- ✓ Future Etango cashflows can fund extensive capacity building, leveraging OEF's established and proven programs.

Environmental leadership in the Namib desert



"We found that Bannerman sets the highest environmental standards for all aspects of their operation. We applaud Bannerman for its openness and for setting an example."

Namibian Chamber of Environment

ENVIRONMENTAL

Environmental leadership in the Namib desert

Environmental baseline
monitoring since 2008

Environmental approvals
granted for Etango mine

Peer reviewed, IFC
compliant ESIA and
management plans



Bannerman constructs signs and barriers to reduce illegal recreational driving in the Namib Naukluft National Park

Our ESG Leadership

Twapewa Kadhikwa

Non-Executive Director - Namibia

Presidential advisor on SME growth
High profile educator on business skills

Werner Ewald

Managing Director - Namibia

Chaired Chamber of Mines' Safety Committee
Trustee of the Namibian Uranium Association

Matjiua Hengua

Senior Stakeholder Relations Advisor

Extensive community engagement across Namibia

Brandon Munro

CEO

World Nuclear Association Advisory Panel
Strategic Advisor - Mining Charter to the Namibian
Chamber of Mines

Ronnie Beevor

Non-Executive Chairman

Extensive listed company governance
experience over 40 year career

Mike Leech

Chairman - Namibia

Past president of the Chamber of Mines
Founder and *Honorary Life Member* – Namibian
Uranium Association





CONTACT

Brandon Munro
Chief Executive Officer

E: info@bmnenenergy.com

T: +61 8 9381 1436



@BannermanEnergy @Brandon_Munro